



WHITE STAR
INVEST. & PROPERTIES DEVELOPMENT LTD.
...Turning dreams to Home.



WHITE STAR
INVESTMENT & PROPERTIES DEVELOPMENT LTD.
...Turning dreams to Home.

**ESTATE
PROFILE**

For more inquiry please contact
Office Address: Plot 38 Saburi Frontage,
Dei-Dei Federal Capital Territory, Abuja, Nigeria
Tel:07035135566, 07031624079, 08059195525
Email: sales@whitestarsproperties.com,
or inquiry@whitestarsproperities.com
www.whitestarsproperties.com

Site Office Address: Jedo MegaCity Fo6,
Cadastral Zone Extension Ushafa District by
Jordan FM Radio Station FCT, Abuja.

CONTACT:

Muazu: 08034920301, CJ: 08036076000, Obi: 07026205883,
Patricia: 07031624079, Yinka:08179923507





WHITE STAR
INVEST. & PROPERTIES DEVELOPMENT LTD.
...Turning dreams to Home.

White Star Investment & Properties Development Ltd was incorporated in Nigeria with No. RC 1254866. The company was established to develop well architectural, quality, rare, smart Estates and Homes as one of its primary objectives.

The Company guarantee it's client of integrity, professionalism and reliability. It is a Member of Real Estate Development Association of Nigeria (REDAN).

To find out more about the company's remarkable feat in Nigeria's Real Estate, Visit our website:

www.whitestarsproperties.com

WHITE STAR ROYAL ESTATE

is located in Jedo Mega City along Bwari- Kubwa express way, Fo 6 Cadastral Zone Ushafa District FCT, Abuja in close proximity with Jordan FM Radio station. The Estate has direct access to the highway with less than 15 mins drive to Central Business District, Abuja. it's located in a well secured, conducive and habitable environment.

White Star Royal Estate offers you a unique close to nature hill side landscape, dainty, valuable and ravishing environment that yields to developed lifestyle parameters.

"...At last the super home of your dreams"



1



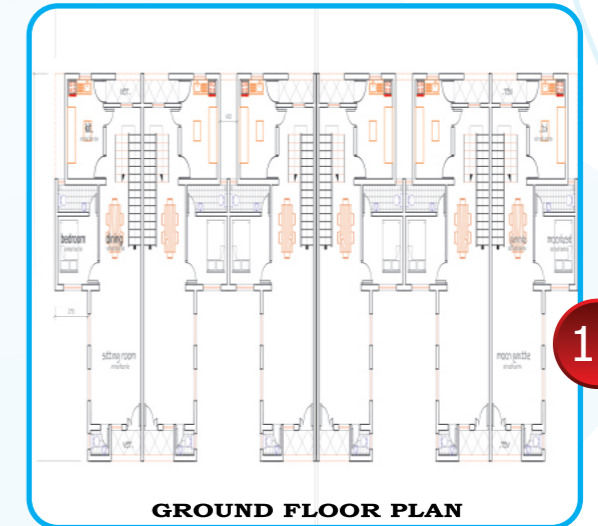
WHITE STAR
INVEST. & PROPERTIES DEVELOPMENT LTD.
...Turning dreams to Home.

FLOOR LAYOUT

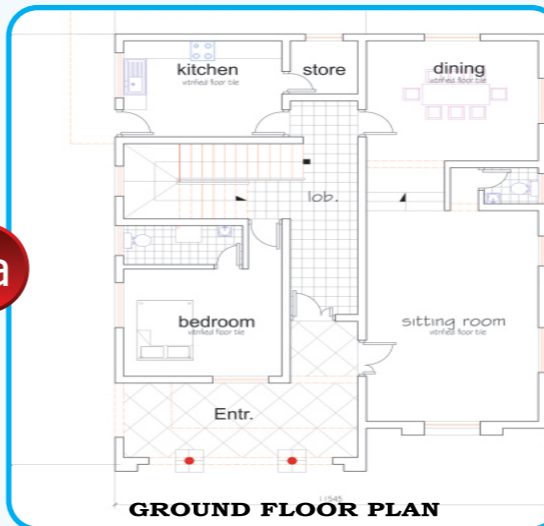
1a



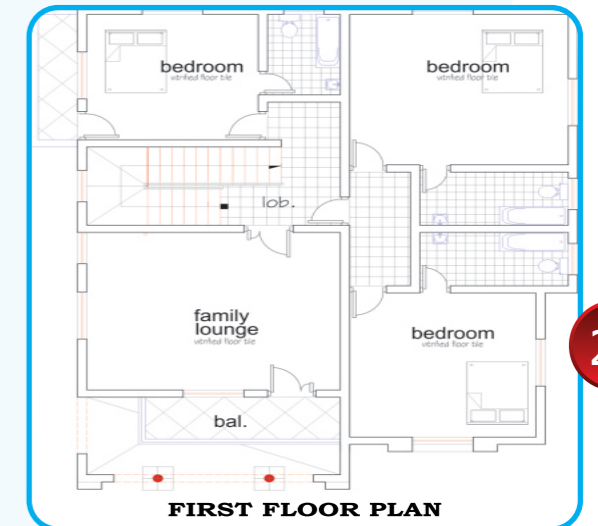
1b



2a



2b



AMENITIES

ENVIRONMENT

The Environment is located in Jedo Mega City along Bwari - Kubwa express way, Fo 6 Cadastral Zone Ushafa District FCT, Abuja in close proximity with Jordan FM Radio station. The estate has direct access to highway with less than 15mins drive to Central Business District, Abuja. The Environment has a unique atmosphere close to nature with hill side landscape, dainty, valuable and ravishing that yields to developed lifestyle parameters.

SECURITY

Primarily the Estate is guarded with Perimeter Fence, Manned Gate, Surveillance cameras and Automated access control system. In addition, the estate has it's police post and equally have it's own private security.

WATER SUPPLY

There will be 24hours water supply within the estate . In addition to that, there is a proposed and inclusive borehole to serve the residents.

ELECTRICITY

Despite the fluctuating power supply in Abuja, Ushafa along side most part of the Ushafa District enjoy 15 to 16 hours of uninterrupted power supply daily. In addition to that, there is renewable power supply system that ensures 24hours supply daily to residents.



6

THE EMERALD BLOCK OF FLATS



THE EMERALD is a very comfortable block of 2/3bedroom block of flats that gives maximum comfort. The contemporary design of this luxury building has all rooms en-suite. It's a modern 3-bedroom's flat with a livingroom, dinning area, kitchen area, a master's bedroom with two other rooms and attached toilets.



CORE VALUE

INTEGRITY:- We advocate the value of honesty , high standard of ethical behaviour and transparency in our dealings with our clients and customers.

EXCELLENCE:- We are committed to professional excellence to make sure that our clients and partners receive the highest professional & quality service.

5



HOUSE TYPES

- ▶ 3 Bedroom Terrace Duplex
- ▶ 4 Bedroom With 2 rooms
DetachedBoys Quarters
- ▶ 2&3 Bedroom Block Of Flats

PROJECT DELIVERY DATE

Eighteen (18) months



FEATURES OF THE WHITE STAR ROYAL ESTATE

- ◆ Full option Smart Homes (optional)
- ◆ Full time Security System with CCTV Cameras.
- ◆ Maximum Power supply
- ◆ Good Access Road with Drainage & Solar Street Lights.
- ◆ Constant and Adequate Water Supply
- ◆ Recreational Facilities
- ◆ Modern Communication Systems
- ◆ Waste Management Systems.
- ◆ Facility Management
- ◆ School
- ◆ Church/ Mosque
- ◆ Unique Feature is also available upon the interest of our client

PAYMENT PLAN

12 MONTHS

Pay an initial deposit of 30% and 70% balance be spread across 12month

PAYMENT TERMS

1. 100% Payment Upfront will attract 5% Discount and guaranteed allocation
2. Instalment Plan - Pay within 12months from the date of application
 - ◆ 30% Upon application for 3 months
 - ◆ 30% within 6 months of the second payment
 - ◆ 30% within 3 months of previous payment
 - ◆ 10% Upon completion and prior to handover

2



**THE REGAL
DUPLEX**

THE REGAL land space is about 540msq, it comprises 4 standard bedrooms all en-suite and 2 bedroom detached boys quarter. Its exquisitely built with spacious living room, family lounge, standard kitchen with fitted cabinet, Interlocked/increte floor, pop ceiling, water heater, walk-in shower including water borehole.

MISSION

Our mission is to have a monogram print in real estate industry by developing an exquisite, well tailored and smart homes /estates with great emphases on our basic core values of excellence ,innovation and professionalism. Our purpose is "**TURNING DREAMS TO HOMES**"

**THE FORTRESS
TERRACE DUPLEX**



THE FORTRESS, the Unit space is about 210sqm. All rooms en suite with 2/3 living rooms. The Terrace Duplex is a stunning family home with an elegant and classic finish, it has three bedrooms and four Toilets. It has a parking space of 2/3 cars.

VISSION

To be taking on board as one of the leading and successful real estate firm in the country and Africa. We have the vision to develop classified and affordable houses to our esteemed clients.